

## Key Features

- Round-cornered square-design housing provides large capacity; maximum work area to install and maintain CATV distribution equipment
- Padlock hasp and factory provided knockouts provide maximum security and flexibility (knockouts permit installation of Inner-Tite or Diversified lock)
- Removable upper cover for efficient equipment installation
- Units may be self-supporting or stake mounted for installation versatility
- Provisions in backplate for accessory mounting brackets allow easy internal mounting of distribution equipment
- Our unique multistage gray-green finishing process meets or exceeds EPA standards, and provides a tough corrosion-resistant finish for longer life

## Description

The TV40 and TV60LP series classic CATV pedestals are round-cornered square-design housings that provide maximum capacity and work area to install and maintain CATV distribution equipment. Pedestals are manufactured of heavy gauge mill-galvanized steel, treated with a unique finishing process for longer life. The housing components are: backplate/lower front cover assembly and upper front cover/cap assembly with hand pocket. The TV60LPSB version includes an offset bracket and 19-in. stake for mounting distribution taps. Ridges in the pedestal ensure pedestal strength and stability.

The TV40 and TV60LP series classic pedestals are self-supporting or may be stake mounted for additional stability. Provisions in the backplate accommodate accessory brackets to mount distribution equipment. Factory provided knockouts and padlock hasp offer several security options.

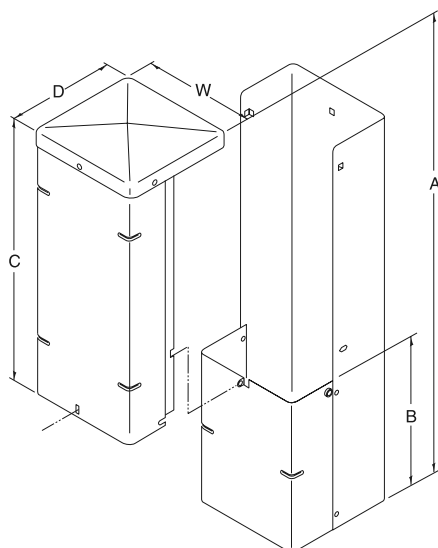
## Application

The TV40 closure is an above-ground pedestal used to house and protect taps. The TV60LP and TV60LPSB serve as above-ground pedestals that have taps or couplers and/or splitters.



TV60LP

# TV40 & TV60LP Pedestals



## Specifications

Catalog Number	Part Number	A	B	C	D	W
TV40	F605810	18-1/4-in.	8-in.	10-in.	4-3/4-in.	4-3/4-in.
TV60LP	F605820	21-in.	8-in.	11-1/2-in.	6-1/2-in.	6-1/2-in.
TV60LPSB*	F605824	21-in.	8-in.	11-1/2-in.	6-1/2-in.	6-1/2-in.

\* TV60LPSB is equipped with a single 19-in. mounting stake, OS (offset) tap mounting bracket and mounting hardware.

## Accessories

Catalog Number	Part Number	Description
<b>Stakes:</b>		
MS1324TV	F603270	24-in. mounting stake with 3/8-in. mounting hardware
MS1332TV	F602130	32-in. mounting stake with 3/8-in. mounting hardware
MS1342TV	F604085	42-in. mounting stake with 3/8-in. mounting hardware
<b>Mounting Brackets:</b>		
L	F601980	3-in. L bracket with 1/4-in. mounting hardware
OS	F606793	Offset bracket with 1/4-in. mounting hardware
<b>Locks:</b>		
ITLPEDS	F539590	Inner-Tite lock with mounting bracket and hardware
DCBLCN	F600055	Star Lock bolt with 801 pattern, push nut & mounting clip

**NOTE:** For factory assembled stake, bracket, and lock option, call customer service at 800-800-1280.

## Emerson Network Power.

The global leader in enabling business-critical continuity.

- AC Power Systems
- Connectivity
- DC Power Systems
- Embedded Computing
- Embedded Power
- Integrated Cabinet Solutions
- Outside Plant
- Power Switching & Control
- Precision Cooling
- Services
- Site Monitoring
- Surge Protection

### Emerson Network Power Energy Systems

4350 Weaver Parkway, Warrenville, IL 60555  
Toll Free: 800-800-1280 (USA and Canada)  
Telephone: 440-246-6999 Fax: 440-246-4876  
www.EmersonNetworkPower.com/EnergySystems

© 2006 Emerson Network Power Energy Systems, North America, Inc. All rights reserved.

The Emerson logo is a trademark and a service mark of Emerson Electric Co. Emerson Network Power is a division of Emerson Electric Co.

Printed in USA



OSPDS-130700 / 1005